



## 209 ASIA HOUSE

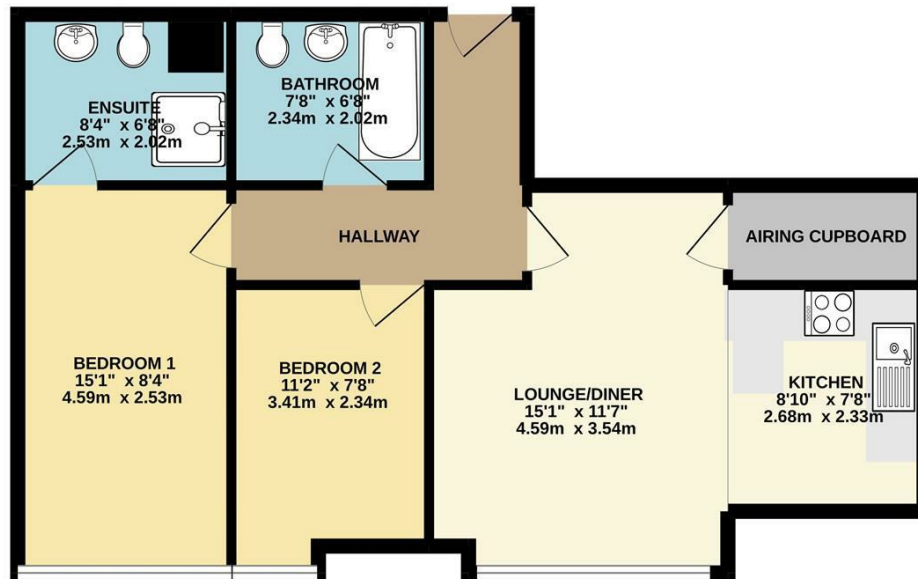
MANCHESTER, M1 6BD

£1,200 PCM

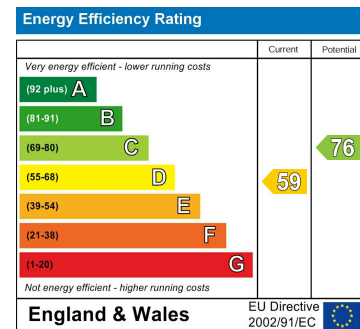
Available from 12th December 2025, this stunning second-floor corner apartment is part of one of Manchester's most popular Victorian developments, perfectly situated in the heart of the City Centre close to Manchester University, Oxford Road, and Piccadilly Stations. The property features a spacious open-plan living room with high ceilings, large sash windows, and original exposed cast iron beams, flowing into a fully fitted kitchen. There are two double bedrooms, including a master with an en-suite, and a modern bathroom. Fully furnished, this apartment combines historic charm with modern comfort in a prime city location.

**buckleyfrayne**

# GROUND FLOOR 634 sq.ft. (58.9 sq.m.) approx.



TOTAL FLOOR AREA: 634 sq.ft. (58.9 sq.m.) approx.  
Whilst every attempt has been made to ensure the accuracy of the floorplan contained here, measurements of doors, windows, rooms and any other items are approximate and no responsibility is taken for any error, omission or mis-statement. This plan is for illustrative purposes only and should be used as such by any prospective purchaser. The services, systems and appliances shown have not been tested and no guarantee as to their operability or efficiency can be given.  
Made with Metropix ©2022



Agents Note: Whilst every care has been taken to prepare these particulars, they are for guidance purposes only. All measurements are approximate and are for general guidance purposes only and whilst every care has been taken to ensure their accuracy, they should not be relied upon and potential buyers/tenants are advised to recheck the measurements

Manchester Office Lettings

6-14 Great Ancoats Street

Northern Quarter

Manchester

M4 5AZ

0161 236 0004

mark.buckley@buckleyfrayne.co.uk

www.buckleyfrayne.co.uk

buckleyfrayne